

Border mountains

The Ligurian – Piedmont Apennines join at a mostly rugged and uninhabited transition point where the Alps blend into the Apennine mountain range to shape the structure of the Italian peninsula.

The Piedmont Apennines are the watershed between Liguria and Piedmont and separate the Padana Lowland from the Ligurian Sea with the hilly - mountainous range named “Oltregiogo”, which is rich in naturalistic, historical and cultural discoveries as well as wine and food offerings.

This territory, abundant in biodiversity, is the meeting point of four regions (Liguria, Piedmont, Emilia Romagna and Lombardia) in the Monte Chiappo area (Upper Borbera Valley).

Towards the west, the Bocchetta Pass, which is located in the Natural Park of Capanne di Marcarolo, marks the geological boundary between the Alps and the Apennines, called “Linea Sestri - Voltaggio”.

The climatic and geological features of this area give rise to many endemic botanical species, such as *Cerastium utriense*, *Viola bertolonii* and *Aquilegia ophiolithica*.

Protected mountains

The natural environment of the Piedmont Apennines, with its grasslands rich in orchids, its gorges cut by streams, its sheltering beechwoods and its agri-environment, represents a treasure of biodiversity. It is safeguarded by the Piedmont Region through the establishment of the Natural Park of Capanne di Marcarolo and the Neirone Natural Reserve and by the European Union with the designation of 5 Sites of Community Importance (SIC) and 2 Special Protection Areas (ZPS).

The Region has created a Managing Agency called Ente di Gestione delle Aree Protette dell'Appennino piemontese (Agency of Protected Areas of the Piedmont Apennines), that also functions as a Reference Center for the Conservation of Herpetological Fauna and an Associated Center for the Conservation of Carnivorous Species in collaboration with the Protected Areas of the Maritime Alps.



The territory

The Managing Agency oversees a territory of about 20.000 hectares that includes the mountains between the Ovada area and the Borbera Valley.

From west to east, we find the Natural Park and SIC/ ZPS of Capanne di Marcarolo with the municipalities of Tagliolo Monferrato, Lerma, Casaleggio Boiro, Mornese, Bosio and Voltaggio as well as the Natural Reserve of Neirone in the municipality of Gavi and the SIC “Massiccio dell'Antola, Monte Carmo, Monte Legnà” that includes the municipalities of Carrega Ligure, Cabella Ligure and Mongiardino Ligure.

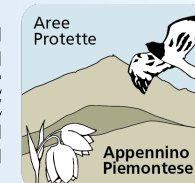
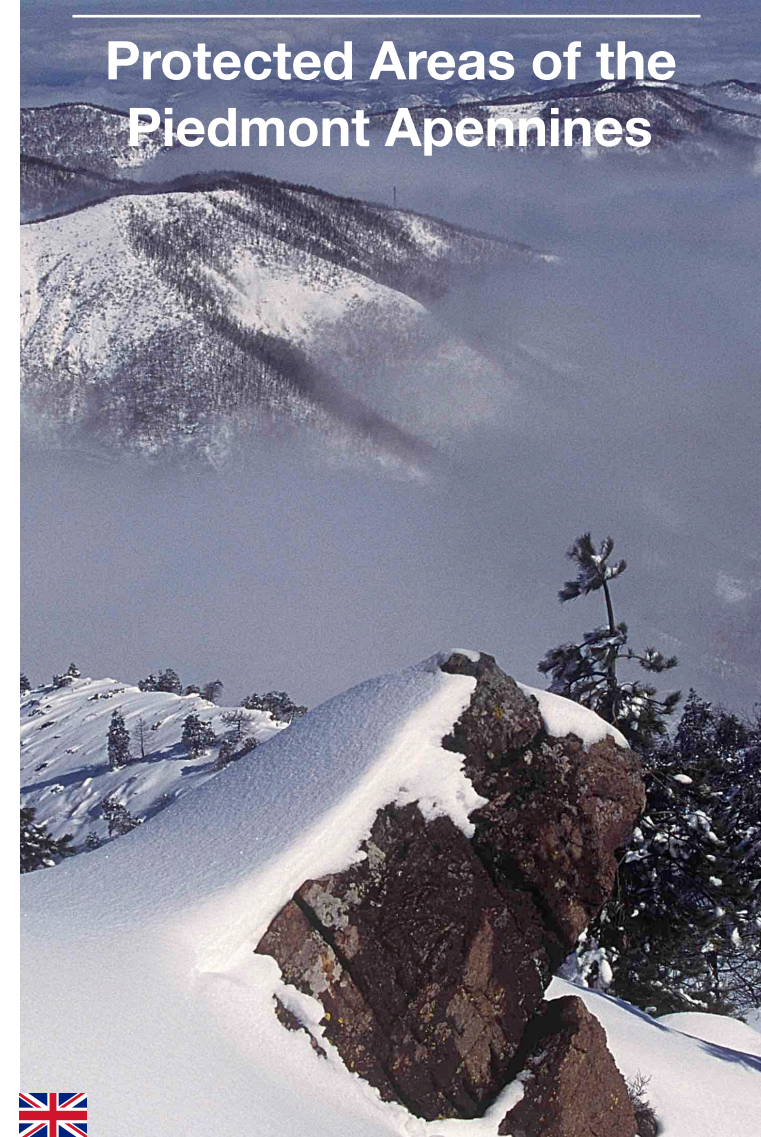
The Natural Park of Capanne di Marcarolo houses the Ecomuseum of Cascina Moglioni, a center for promoting both traditional local culture and the mountain agri-environment.

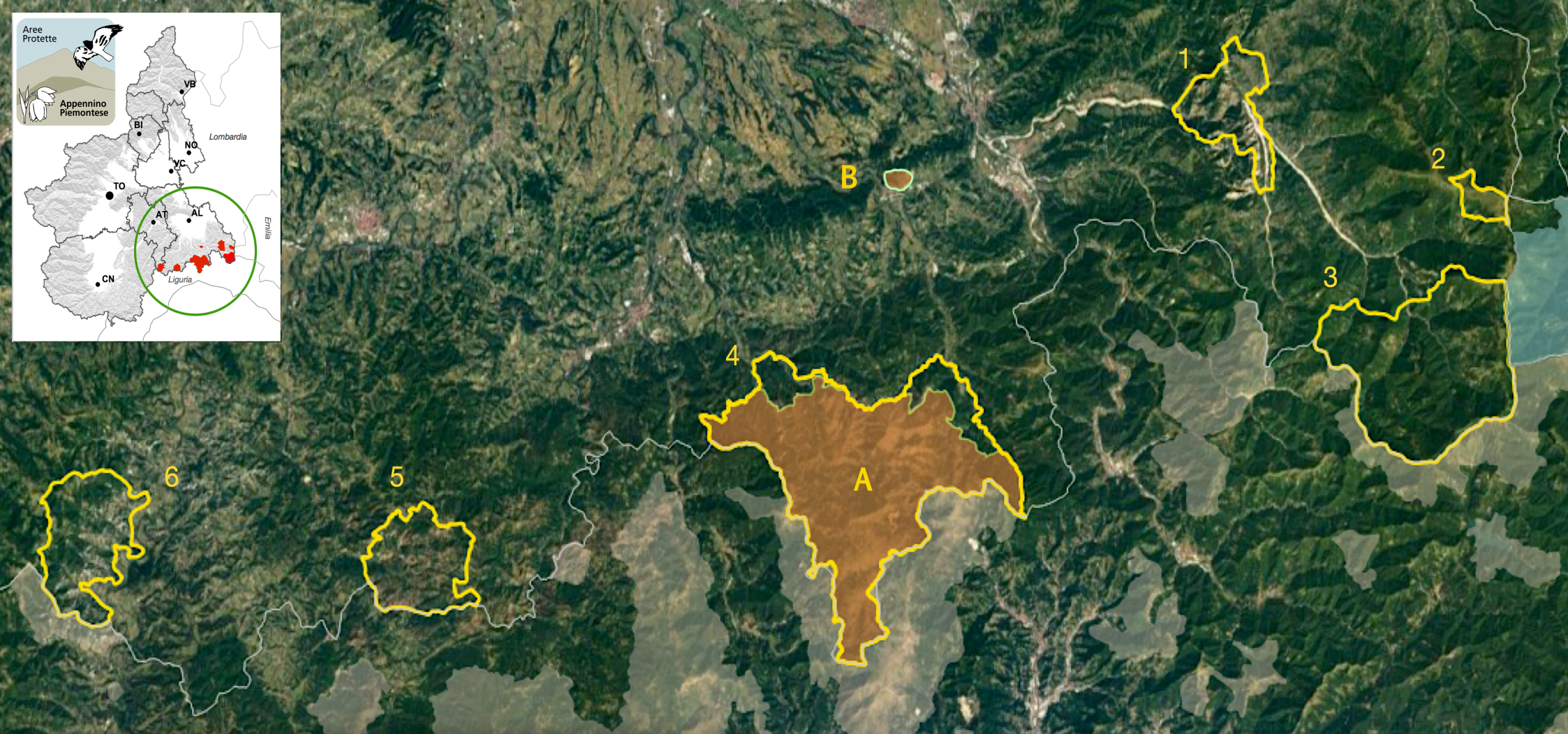
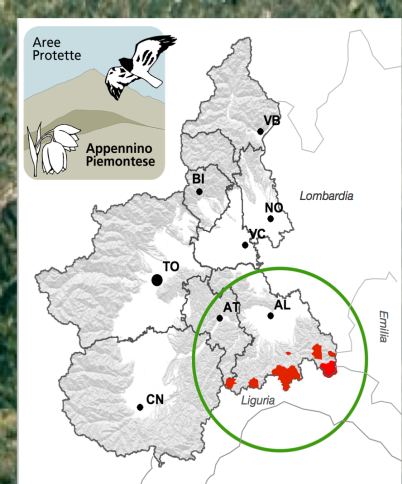
**ENTE DI GESTIONE
DELLE AREE PROTETTE
DELL'APPENNINO PIEMONTESE**
Via Umberto I 32/A - 15060 Bosio AL
Uffici: 0143684777 - Sede op.: 0143877825
info@areeprotetteappenninopiemontese.it
areeprotetteappenninopiemontese@pec.it
www.areeprotetteappenninopiemontese.it

facebook

Aree Protette Appennino Piemontese

Protected Areas of the Piedmont Apennines





Aree Protette dell'Appennino Piemontese

Parchi e riserve naturali regionali:

- A: Parco Naturale delle Capanne di Marcarolo
- B: Riserva Naturale del Neirone

Unione Europea - Siti della Rete Natura 2000:

- 1 IT1180009 "Strette del Borbera"
- 2 IT1180025 "Dorsale Monte Ebro - Monte Chiappo"
- 3 IT1180011 "Massiccio dell'Antola, Monte Carmo, Monte Legnà"
- 4 IT1180026 "Capanne di Marcarolo"
- 5 IT 1180017 "Bacino del Rio Miseria"
- 6 IT1180010 "Langhe di Spigno Monferrato"

 Siti Natura 2000 Regione Liguria

 Siti Natura 2000 Regione Emilia Romagna



REGIONE
PIEMONTE

